

# TRUSTLEX DISSOLVED HYDROGEN PORTABLE METER ENH-1000

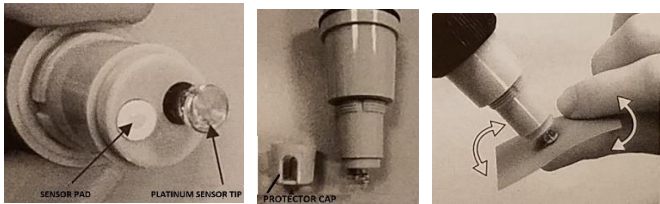
With proper care this meter can last a long time.

## Description and Specifications:

1. Switchable display for ppm/ppb (parts per million or billion)
2. Measuring range: 0~2.0 ppm or 0~2000 ppb
3. Margin for error: +/- 5 ppb
4. Comes with:
  - 4 AAA batteries (already installed)
  - 2 bottles of sensor soaking solution
  - Sensor cleaning paper
  - Sensor moistening cap with O-ring
  - Hexagonal wrench & screws for battery cover

## User Instructions:

Clean the sensor tip and moisturize the sensor pad before your first use and then whenever it needs it.



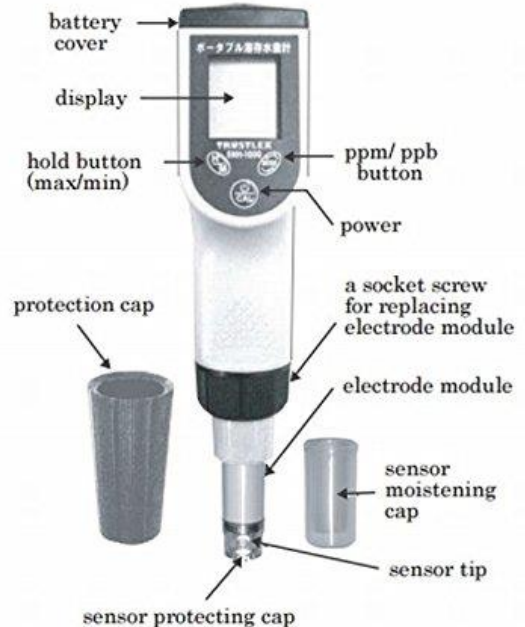
**How to Clean/Polish the Platinum Sensor Tip:** Remove the protective cap from the sensor area. Put a little drop of distilled water on the rough side of the sand paper and polish the platinum sensor tip using light, rotational movements of your thumb, as pictured, for 10 back and forth strokes. Continue polishing if the tip visibly needs it. [Note: several small pieces of special, fine-grade, sand paper are included. If you run out you may substitute for similar paper purchased locally.]

**Sensor Pad:** If you don't use the Trustlex meter regularly, the sensor pad may dry out. Follow these instructions to moisten it up.

1. Fill the sensor moistening cap half full with the sensor soaking solution.
2. Remove the sensor protecting cap.
3. Screw the sensor moistening cap in place.
4. Set the meter upright in a dry cup or container.
5. Let sit in solution for one to two days.
6. For economy, you can re-use this solution. If the solution contacts your skin, rinse it off well.

7. When finished soaking, put the sensor protecting cap back on and rinse the sensor off with water.
8. Frequent use: Air dry meter between uses.
9. Infrequent use: Put a small amount of soaking solution in moistening cap so air stays moist.

## [ Components ]



## Preparing to Measure:

1. If you haven't used the meter or moistened up the sensor pad for a long while, or if the sensor tip needs cleaning, follow *Sensor Pad* instructions first.
2. Make sure the sensor protecting cap is in place.

## How to Measure:

1. Only measure water. Other solutions may harm this meter. Place an inch or so of the water to be measured in a sturdy cup or glass.
2. Power on the meter and place it in the cup.
3. The display will flash as pictured below, and then will show the measurement. (Horizontal line means meter is attempting to measure.)
4. Turn it off, or it will auto-off after 10 minutes.

